



KAMAI GROUP
PEFKALI
RESIDENCE
PROJECT

AMONI KALOGERO
LIMANO BEACH ,KORINTHOS,
2023

Section 1: 3 Houses
Section 2: 1 House



A KAMAI GROUP PROJECT
BY AKKM ARCHITECT OFFICE



PROJECT 1

THE GREY

SECTION 2

3 HOUSES



SECTION 2

DESCRIPTION

High standing building with 3 apartments with swimming pool and full sea view

Total : 3 Houses

Public swimming pool

100m² and public area 50m²

House 1 - First floor : 51,78 sq.m

Exterior terrace: 109 sq.m

Inside area: 51,78 sq.m

House 2 - Groundfloor : 169,28 sq.m

Balcony: 21 sq.m

3 levels

4 Bedrooms - 4 Bathrooms

House 2 - Groundfloor : 157,23 sq.m

Balcony: 16,3 sq.m

3 levels

3 Bedrooms - 4 Bathrooms















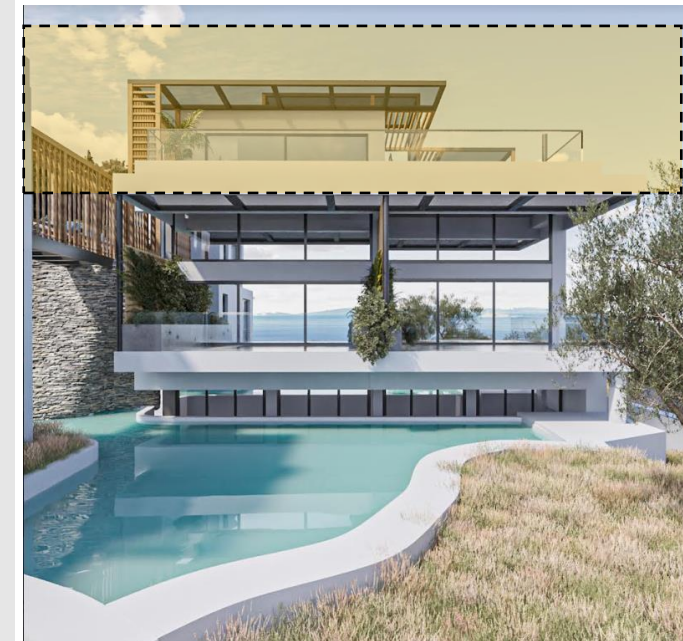
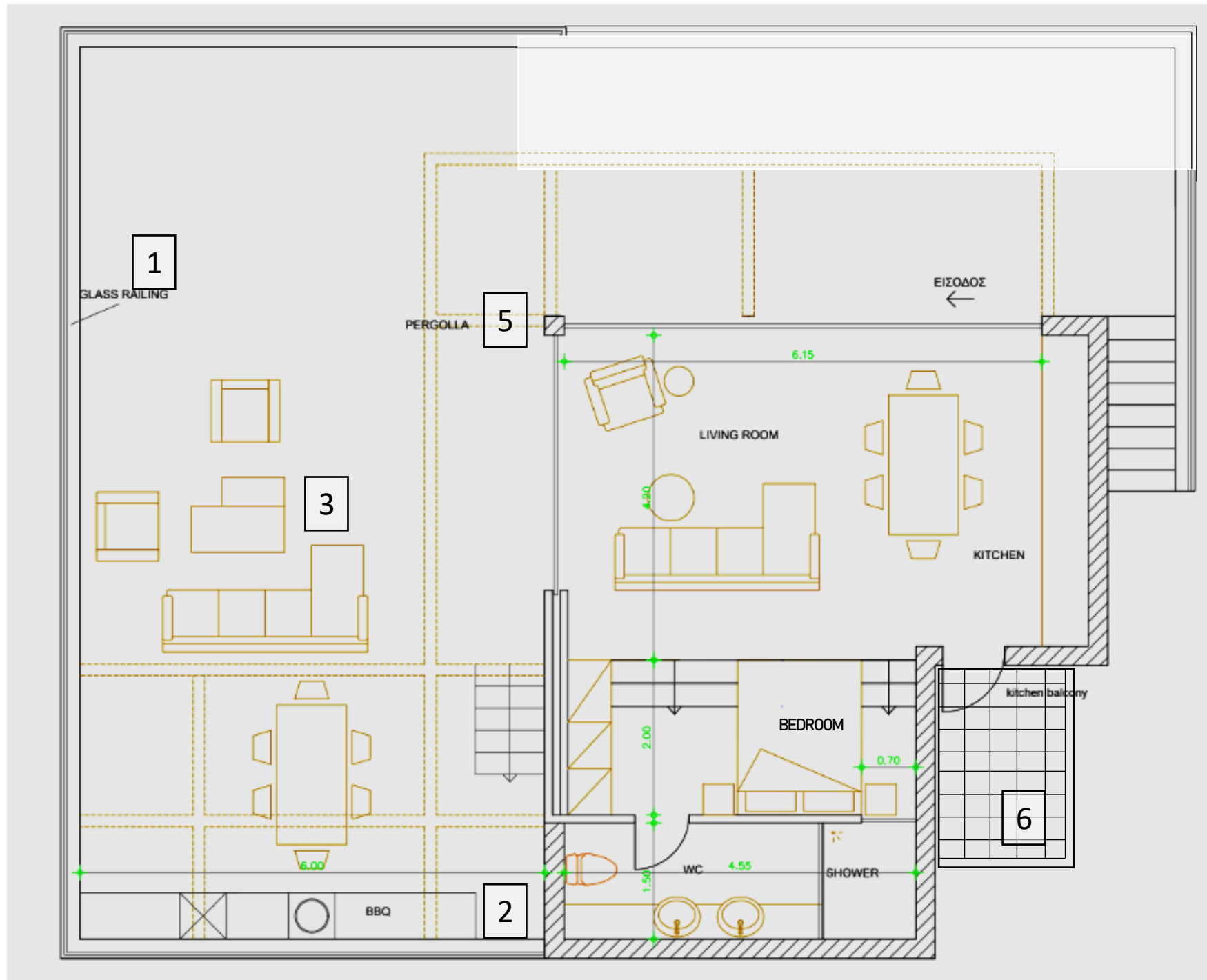
PROJECT 1

SECTION 2

HOUSE 1/3

1st FLOOR (+6.00 m height)

ARCHITECTURAL PLAN



PROPOSAL

Outside area

1. Perimeter glass railing
2. BBQ
3. Outside seating area
4. Outdoor dining area
5. Pergola without pillars, hanging from the building
6. Balcony of the kitchen (pergola tent)

Inside area

1. Living room
2. Windows sliding frames on top of each other
3. Kitchen-dining table
4. the bed will be raised above the height level (2 steps) so that the view from the living room is not interrupted
5. WC private
6. WC shared

AREA

Outside area = 160m² (109m² pergolas)

Inside area = 51,78m²

The frame – bench – back
is from plywood and
καπλαμάς/veneer
δρυς/oak

Window for the balcony

Wall concrete

Milky glass door to WC

Closet



The doors are from bakelite (white)
lined plywood
Built-in electric equipment (more
details at the kitchen section 1)

Step for second level to
the bed area – view up of
the living area

Floor Oak

False ceiling
with plaster
board

Led light (led strip)
hidden behind the
curtain

Aluminum
minimal frames
for windows



Hanging pergola



Minimal frames
aluminum window

Tile/Smooth
concrete floor

Glass railings
with
aluminum
gunwale



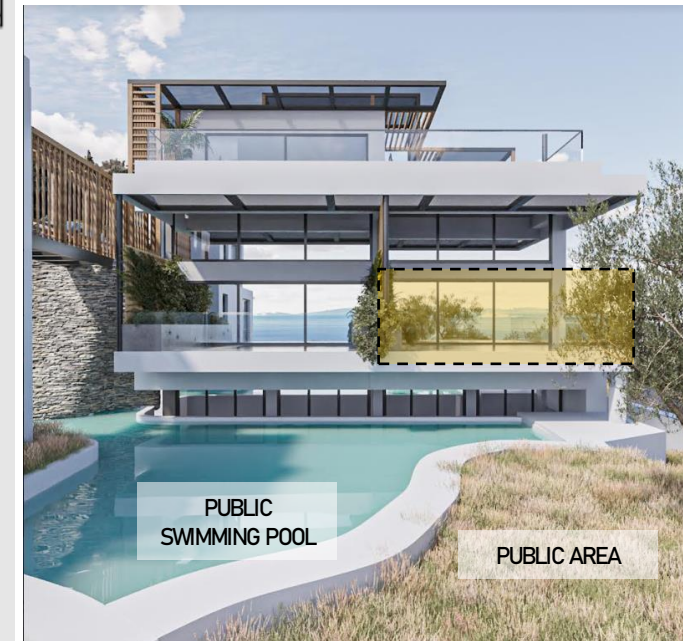
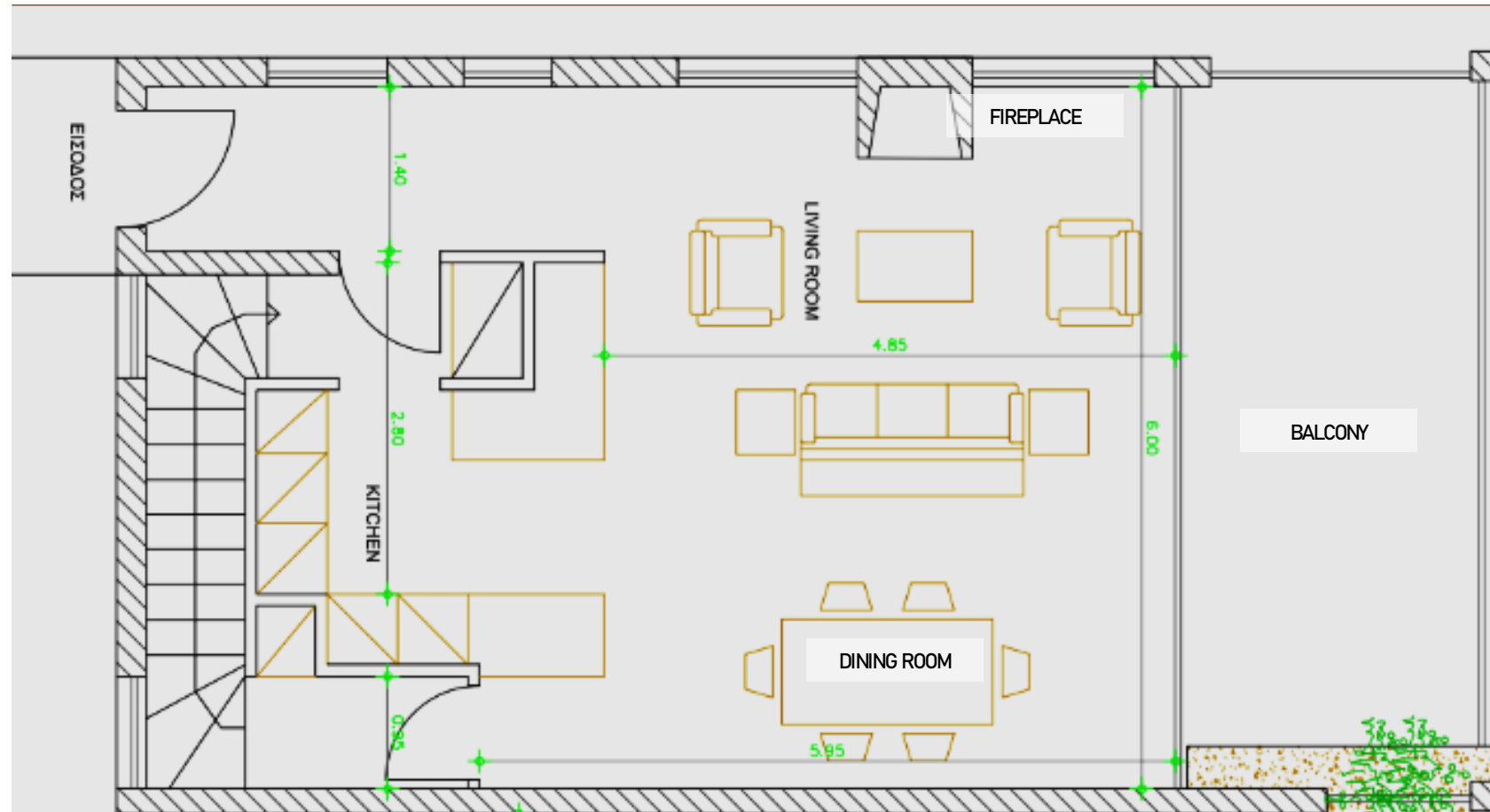
PROJECT 1

SECTION 2

HOUSE 2/3

GROUND FLOOR, HOUSE 2 (+0.00 m height)

ARCHITECTURAL PLAN



AREA HOUSE 2

Outside sheltered area = 15 m^2 + balcony extension 6 m^2

Inside area:

Area main use = $79,79 \text{ m}^2$

Ground floor = $55,20 \text{ m}^2$, Gallery = $24,59 \text{ m}^2$

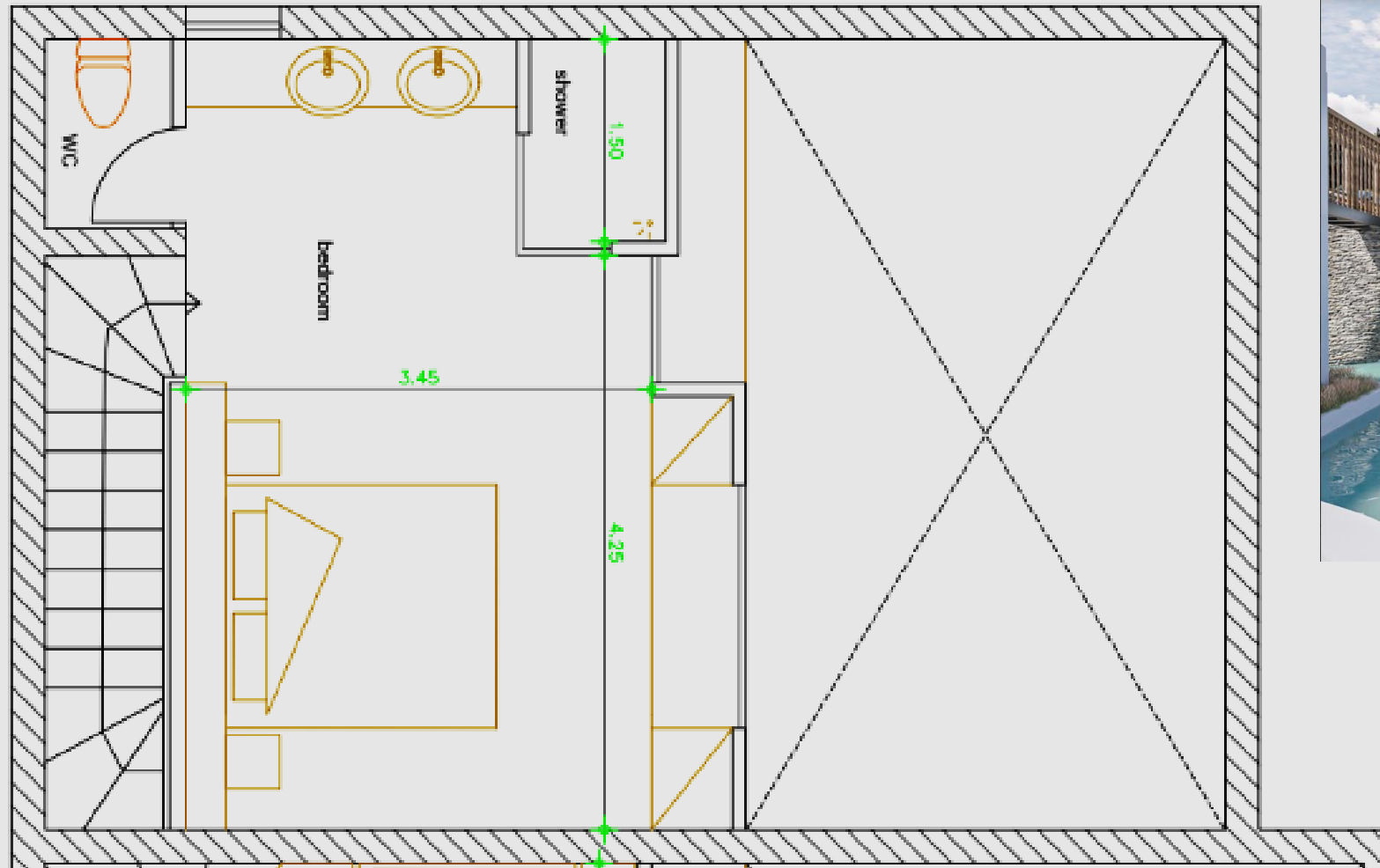
and basement with dormer floor = $77,85 \text{ m}^2$

Total area = $169,28 \text{ m}^2$

Public swimming pool for 2&3 of the 3 houses (section2) 100 m^2 and public area 50 m^2

GALLERY, HOUSE 2 (+3.00 m height)

ARCHITECTURAL PLAN



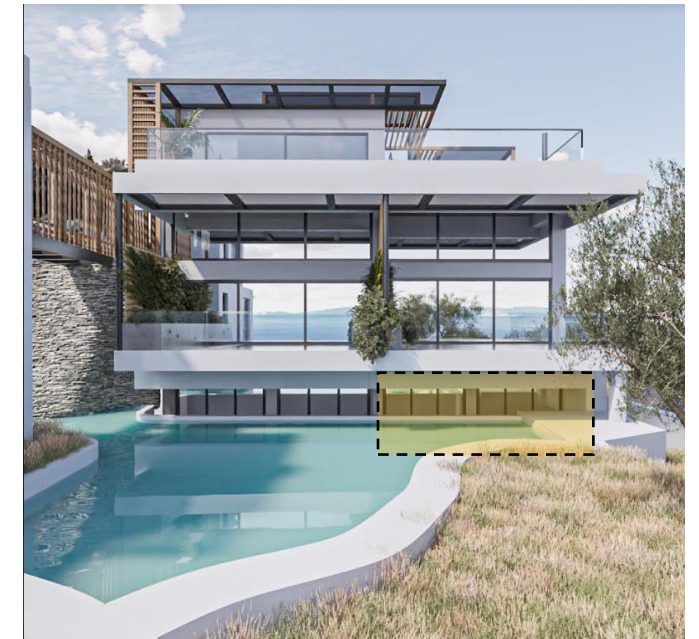
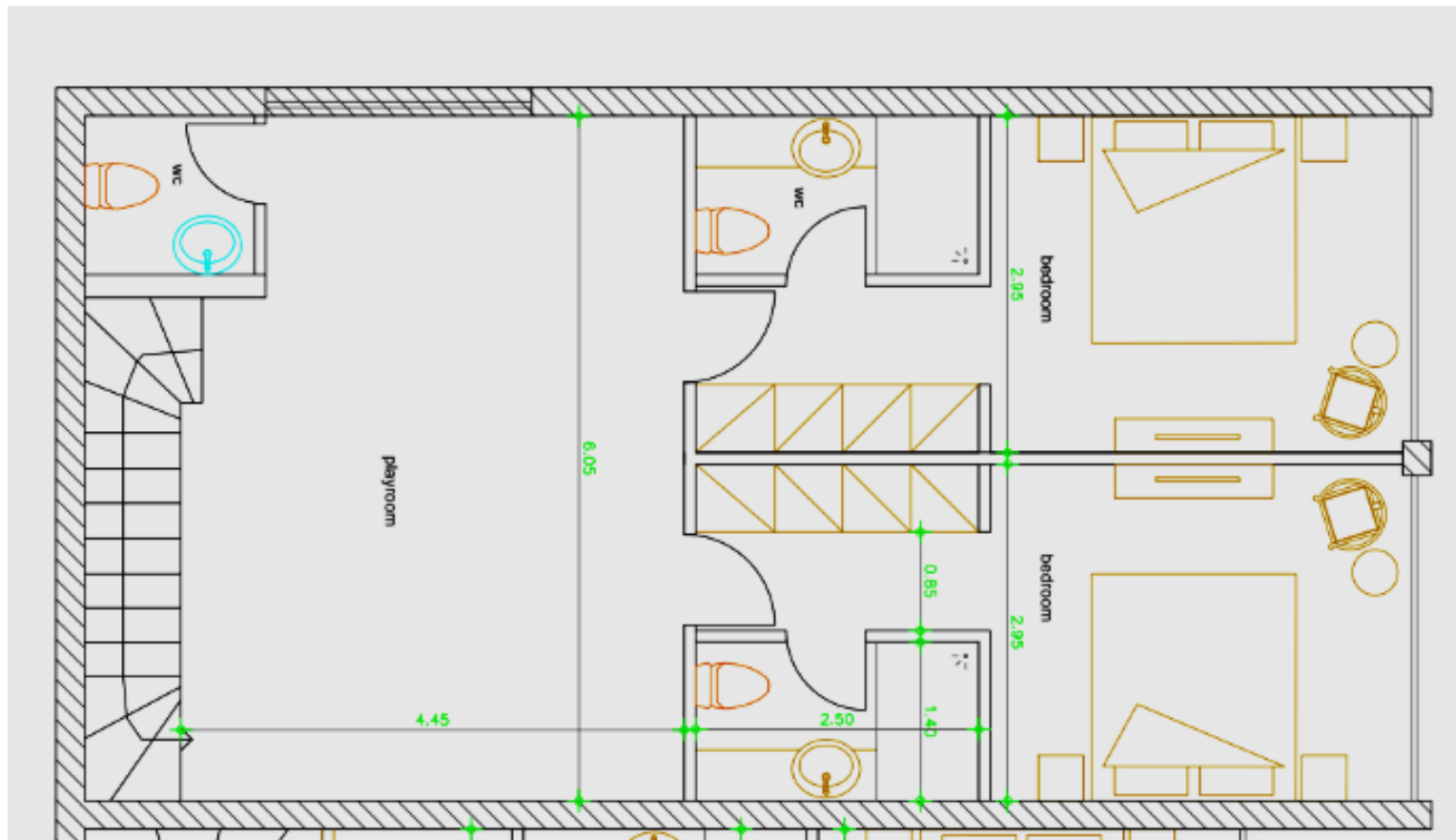
PROPOSAL

Inside area

1. Bed 1.80x2.00 m
2. WC in the room
3. Hanging closet

UNDER GROUND SPACE WITH DORMER, HOUSE 2 (-3.00 m height)

ARCHITECTURAL PLAN



PROPOSAL

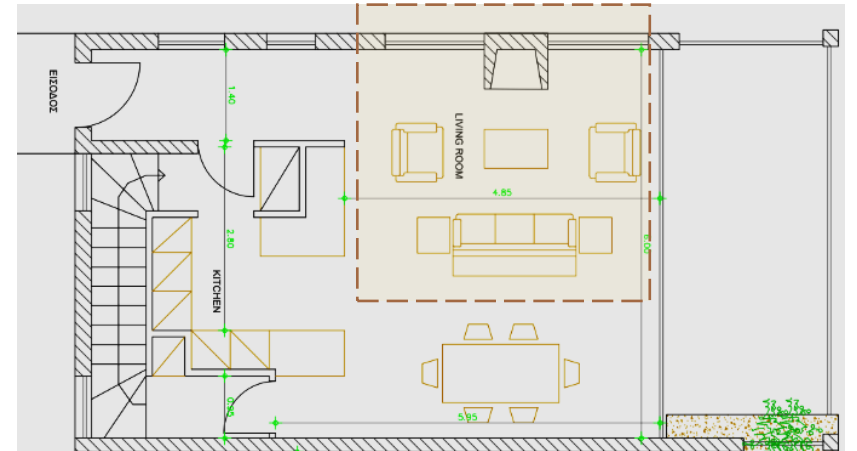
Inside area

1. Playroom
2. 3 WC
3. 2 bedrooms
4. 2 closets each house with suitcase holder-storage
5. Curtains until the ground





ΠΡΟΤΑΣΗ PROPOSAL LIVING ROOM REFERENCES



Materials:

- Minimal-clear lines at the furniture style
- Main light is a rail which runs the entire ceiling according to the layout of the space
- The floor is from wood oak
- Minimal aluminum frames at windows
- Linear furniture which supports the fireplace system
- the chimney of the fire place is made of black-cover of tile (1,20x4m)
- Wide wall window to the balcony

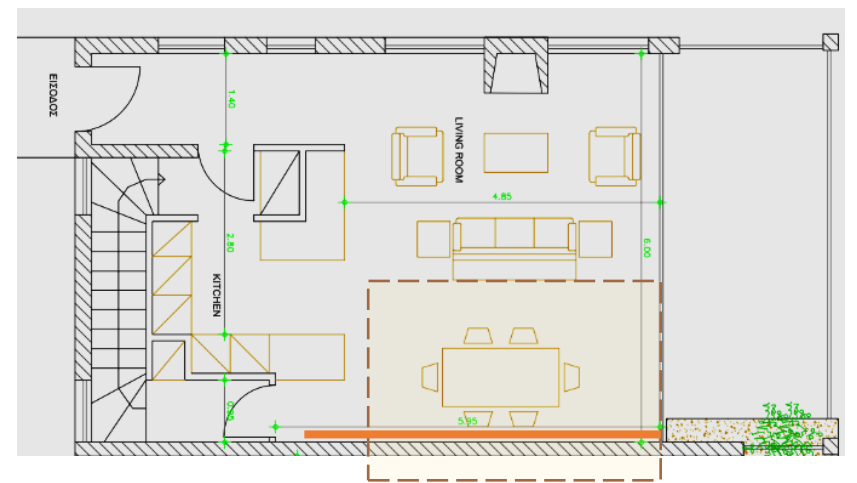


Lined design
for the
fireplace



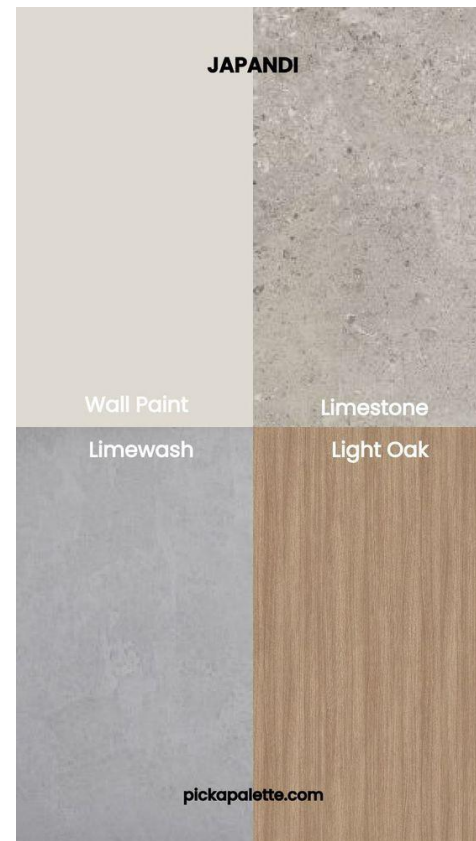
TV up of the
fireplace

ΠΡΟΤΑΣΗ PROPOSAL DINING TABLE REFERENCES

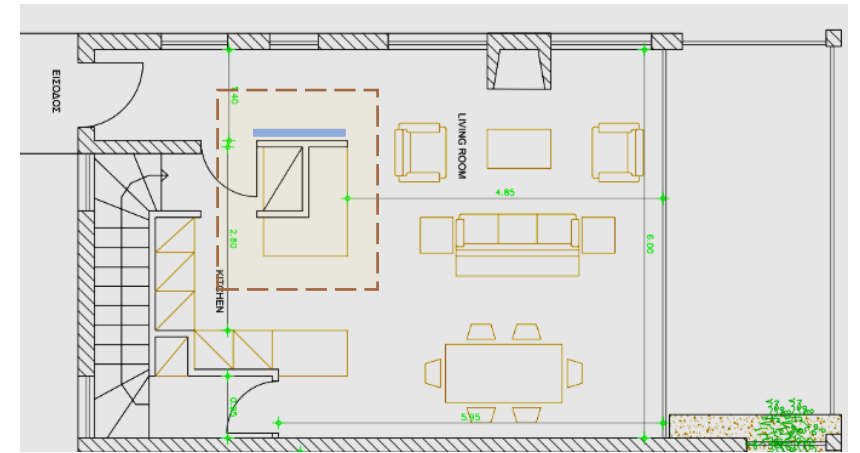


Materials:

- The dining table behind the sofa has the background of wooden oak wall (**orange** line on the plan)
- Hanging lights is the decoration part (they will come from the rail which runs the entire ceiling)
- The materials prevailing in the area is wood-oak wall and floor, limestone-concrete-white light colors of the ceiling, walls, curtains, furniture and black details of decoration (e.x. lights-rails)



ΠΡΟΤΑΣΗ PROPOSAL LIVING AREA center REFERENCES



Mirror wall

Materials:

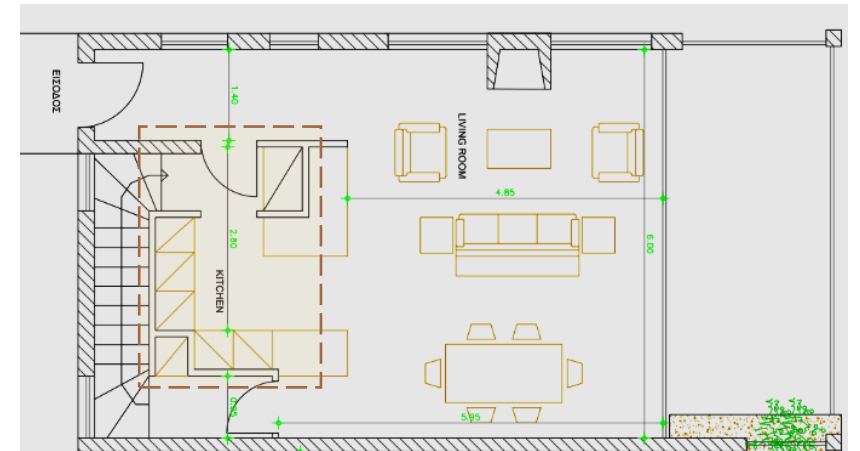
- The wall which faces the windows will be covered from mirror (blue line on the plan) with the door at the side – entrance of the kitchen
- The space behind the mirror-wall is mini bar-table semiclosed



Mini bar



ΠΡΟΤΑΣΗ PROPOSAL KITCHEN REFERENCES

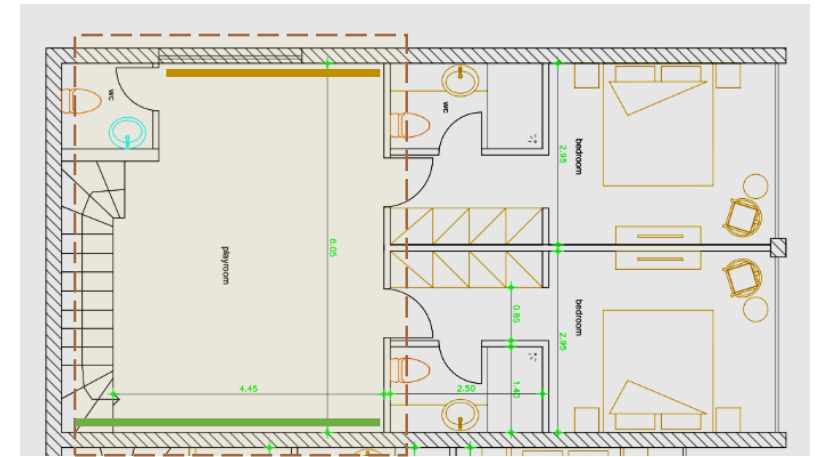


Materials:

- corner kitchen
- Doors of the cupboards vakelite light offwhite
- Glass arme covered-long and narrow cupboard with internal hidden lighting, black aluminum frame of the glass
- The bench and the back of technogranite limestone
- The inside boxes of the cupboards are from MDF with melamine in oak color
- The handles are gola profiles
- The electric equipment (oven, microwave, fridge, stoves, dishwasher) are built-in codes with glass black obvious appearance
- The drawers/βαγονέτα, are type blum
- The sink is under seat or over seat black
- The sink battery is black
- The sockets on the back are black (Legrand Valena Allure)
- Lights: Led strip line under the oak cupboards or and the spots of the rail (they will come from the rail which runs the entire ceiling) sit down the main light

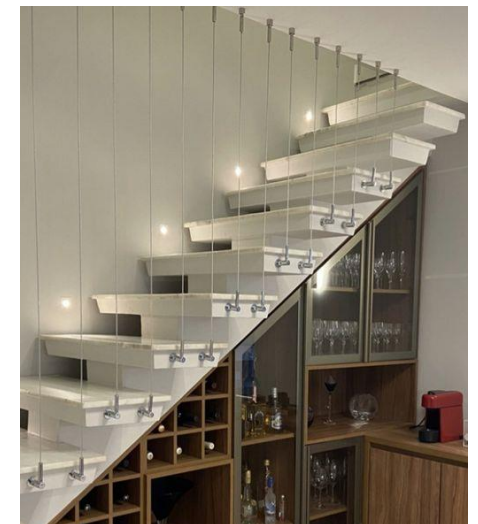


ΠΡΟΤΑΣΗ PROPOSAL Downstairs PLAYROOM REFERENCES



Materials:

- floor is wooden – oak
- The ceiling is white plasterboard false ceiling with concrete squares lighted from led strip
- The walls are from concrete (light gray)
- Black aluminum dexions on the wall (yellow line)
- Staff = billiards, meeting table, fridge for drinks and a bar table with stools, foosball table, sound system etc.
- Lights from the concrete squares in the false ceiling and centered to the tables hanging lights (ex. Up of the billiards)



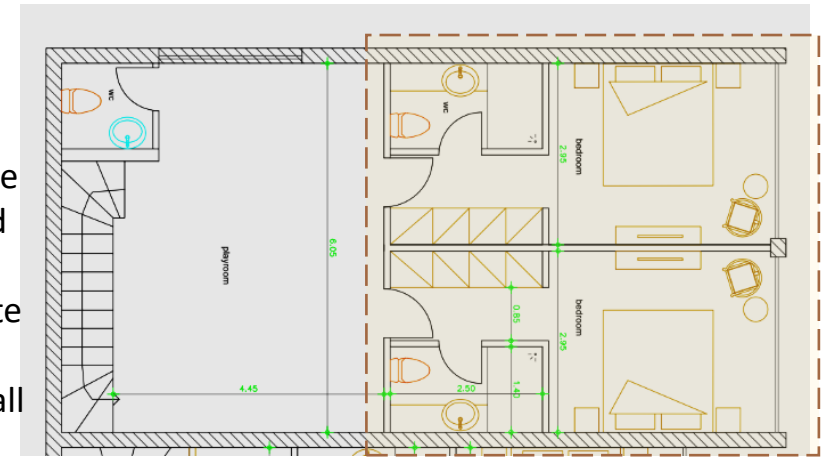
hanging steps with metal ropes

ΠΡΟΤΑΣΗ PROPOSAL BEDROOMS

REFERENCES

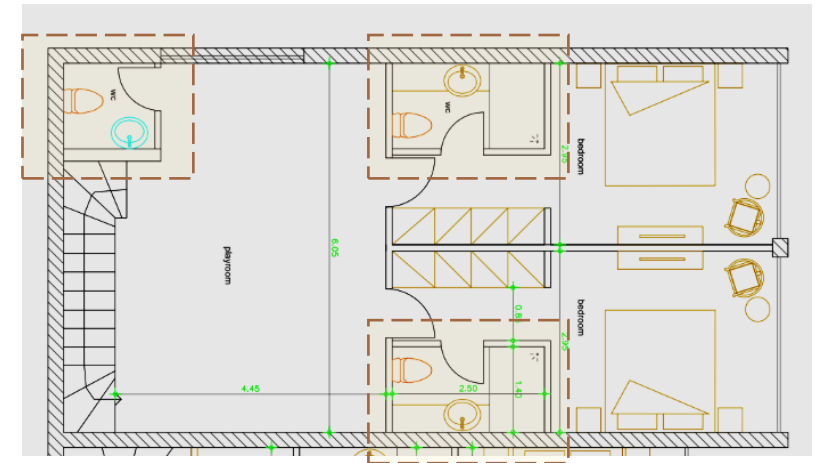
Materials:

- Concrete the back wall of the bed
- The ceiling is white plasterboard false ceiling (perimeter hidden light led strip 3000K)
- linear wooden wall furniture opposite the bed
- Same wood 1m-level covered the wall with unit construction which continues to bedside tables
- Hanging lights up of the bedside tables
- Wooden oak floor
- Closets from black φυμέ tinted glass - semicovered



Light in a false ceiling to light the concrete wall behind the bed

ΠΡΟΤΑΣΗ PROPOSAL Downstairs BATHROOMS REFERENCES

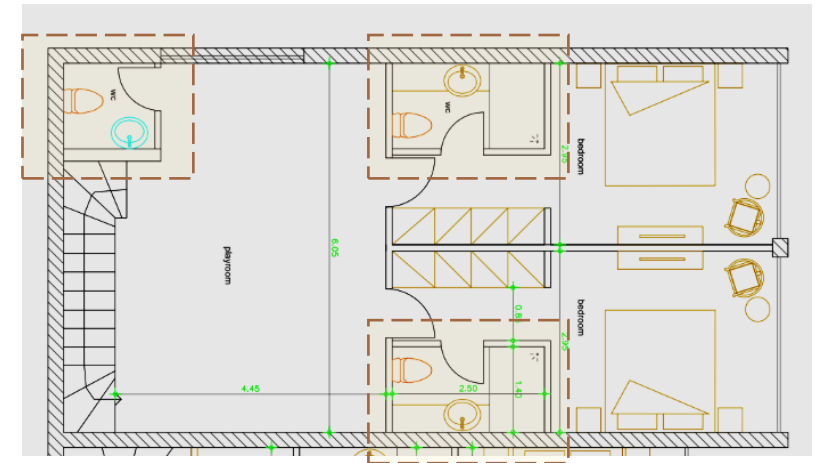


Materials:

- Glass door – milky/arme opening or sliding with black metal frame
- White furniture technogranite

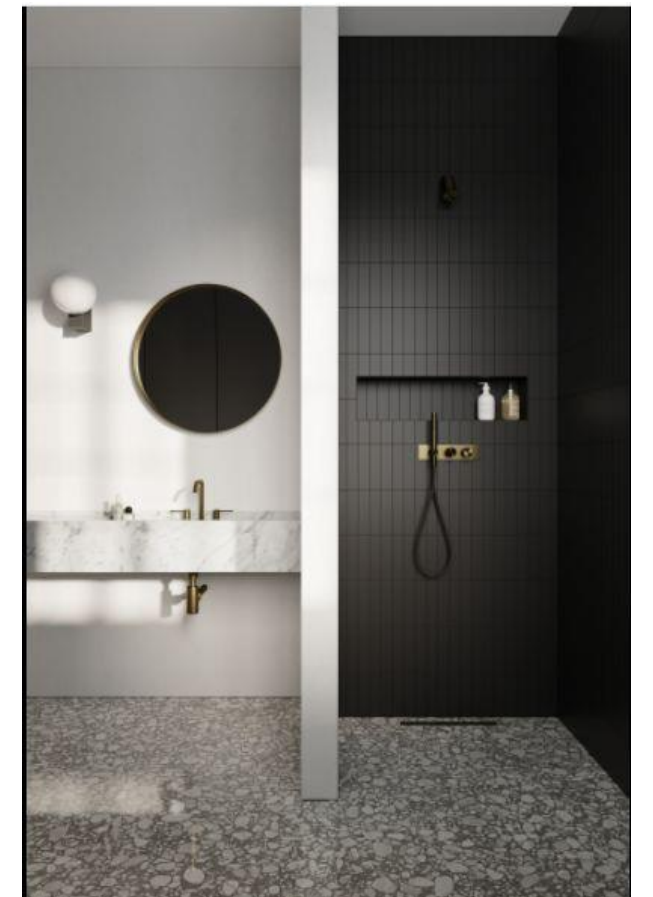


ΠΡΟΤΑΣΗ PROPOSAL Downstairs BATHROOMS REFERENCES



Materials:

- Glass door – milky/arme opening or sliding with black metal frame
- White furniture technogranite on the wall
- Up down (ceiling – floor) one side mirror
- Built-in washbasin, on top washbasin mixer
- Hanging light (decoration)
- Ceiling waterproof spots (main light)
- Built-in cistern and battery – switch (black matte)
- Black tiles/cement texture in wetrooms

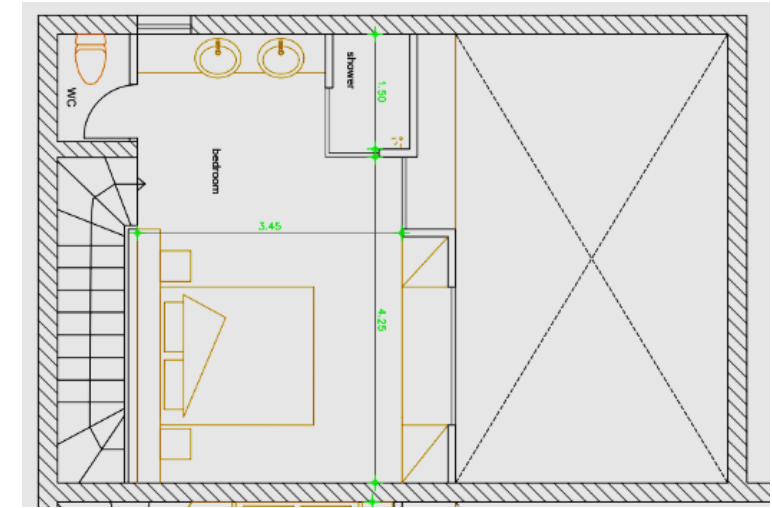


ΠΡΟΤΑΣΗ PROPOSAL 1st floor BEDROOM REFERENCES



Materials:

- Concrete the back wall of the bed
- The ceiling is white plasterboard false ceiling (perimeter hidden light led strip 3000K)
- linear wooden wall furniture opposite the bed
- Hanging lights up of the bedside tables
- Wooden oak floor
- Closets wardrobe on either side of the balcony door



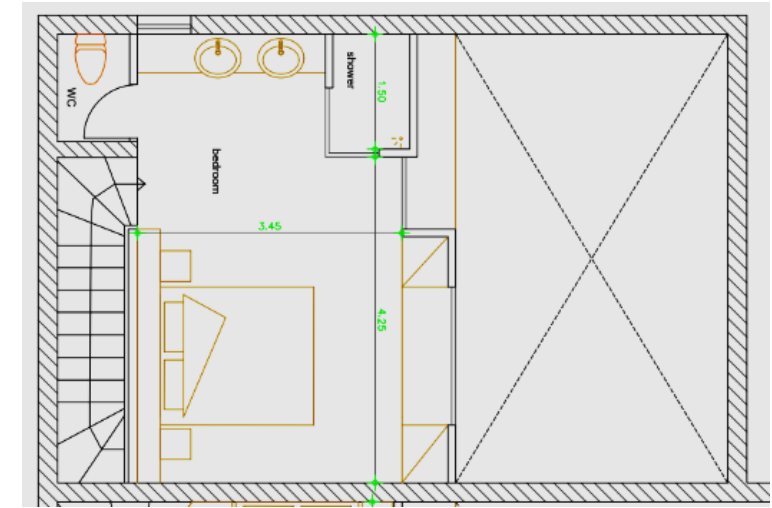
ΠΡΟΤΑΣΗ PROPOSAL 1st floor BEDROOM

REFERENCES



Materials:

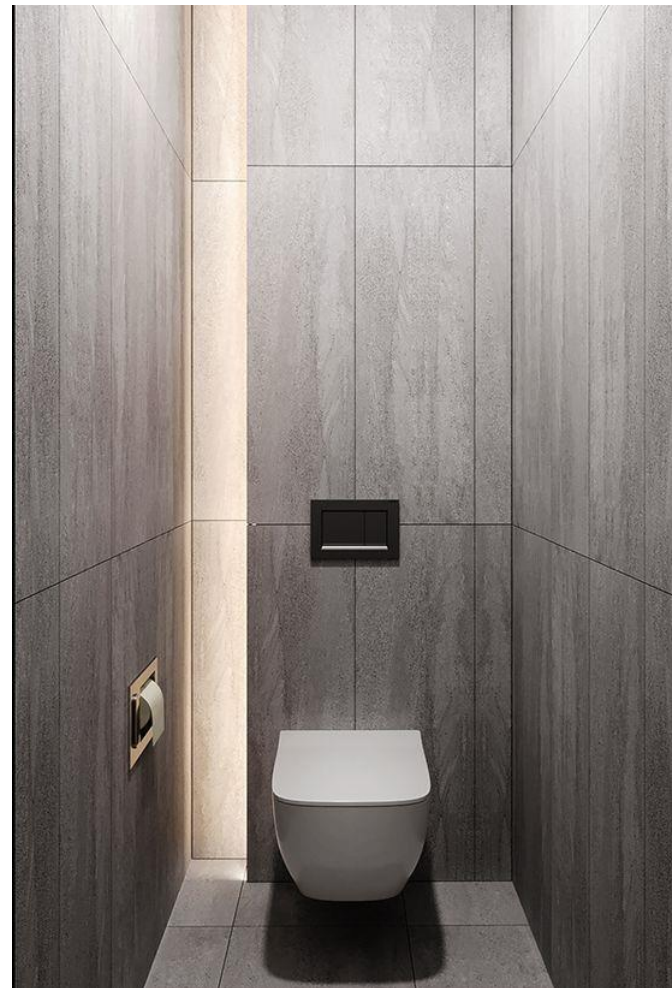
- Furniture of sink vanelites
- Glass covering for the wetroom
- On the wall batteries for the sink
- Led light mirrors – black frame



Wooden/Concrete wall divider between basin and furniture of the sink



Led lighted wall recess wetroom & basin



Tiles – type concrete of the wetroom





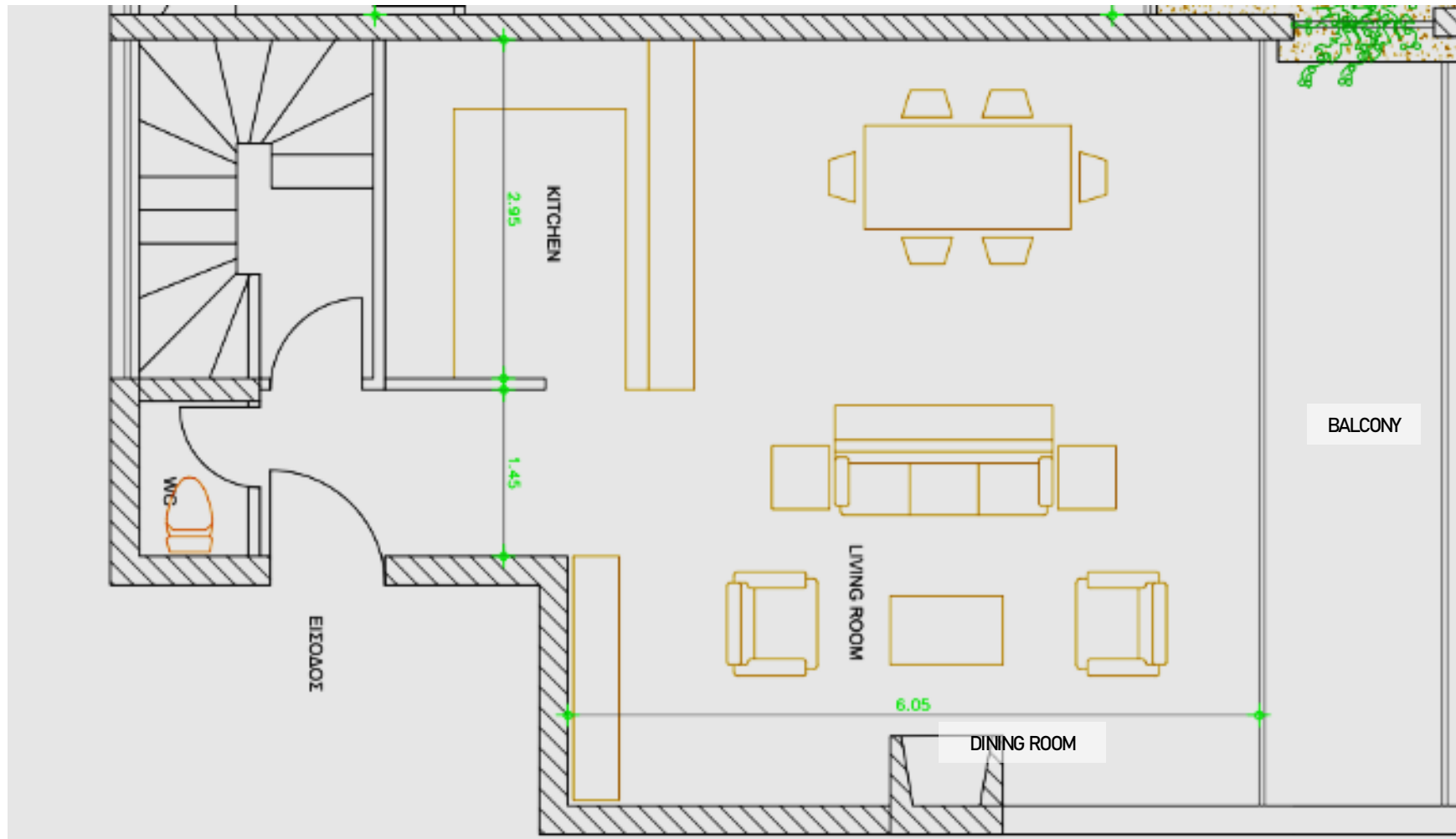
PROJECT 1

SECTION 2

HOUSE 3/3

GROUND FLOOR, HOUSE 3 (+0.00 m height)

ARCHITECTURAL PLAN



AREA HOUSE 3

Outside sheltered area = $10,34 \text{ m}^2$ + balcony extension 6 m^2

Inside area:

Area main use = $77,56 \text{ m}^2$

Ground floor = $60,33 \text{ m}^2$, Gallery = $17,23 \text{ m}^2$

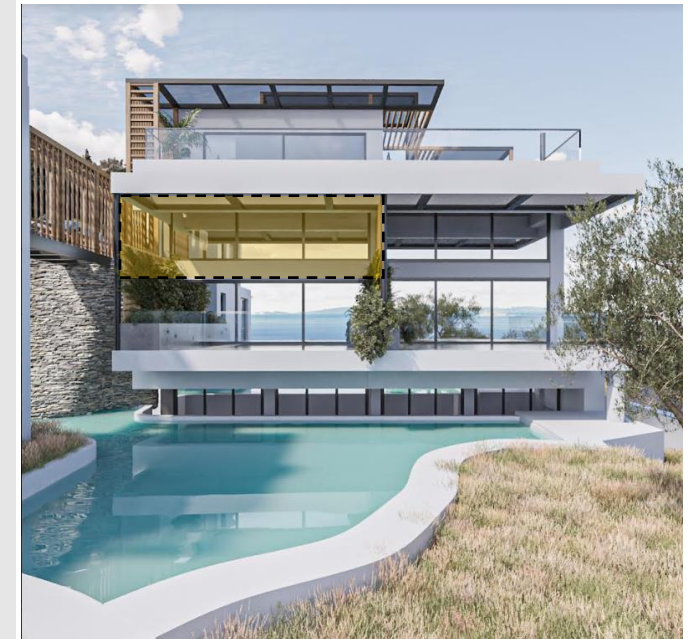
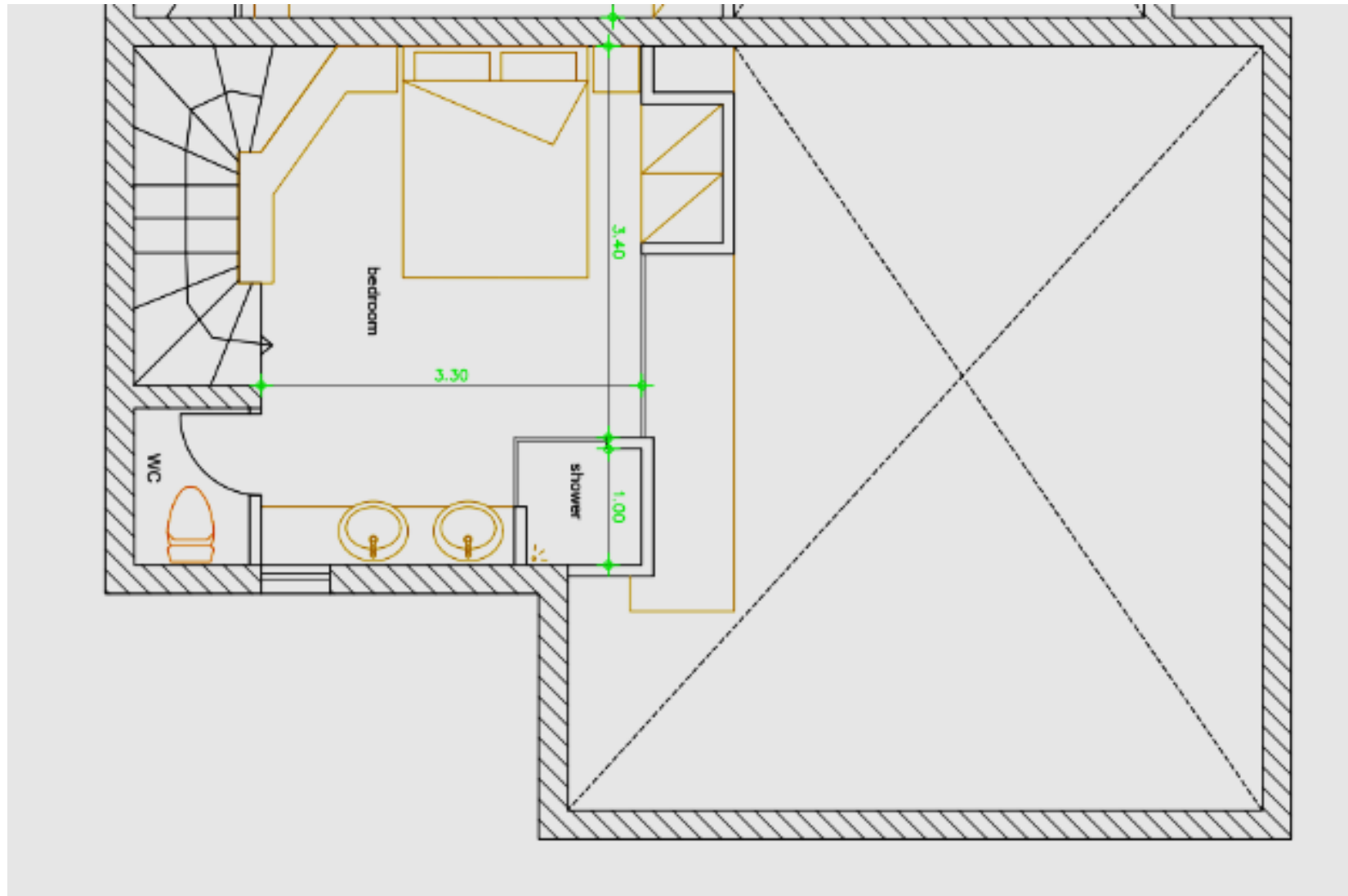
and basement with dormer floor = $68,88 \text{ m}^2$

Total area = $157,23 \text{ m}^2$

Public swimming pool for 2&3 of the 3 houses (section 2) 100 m^2 and public area 50 m^2

GALLERY, HOUSE 3 (+3.00 m height)

ARCHITECTURAL PLAN



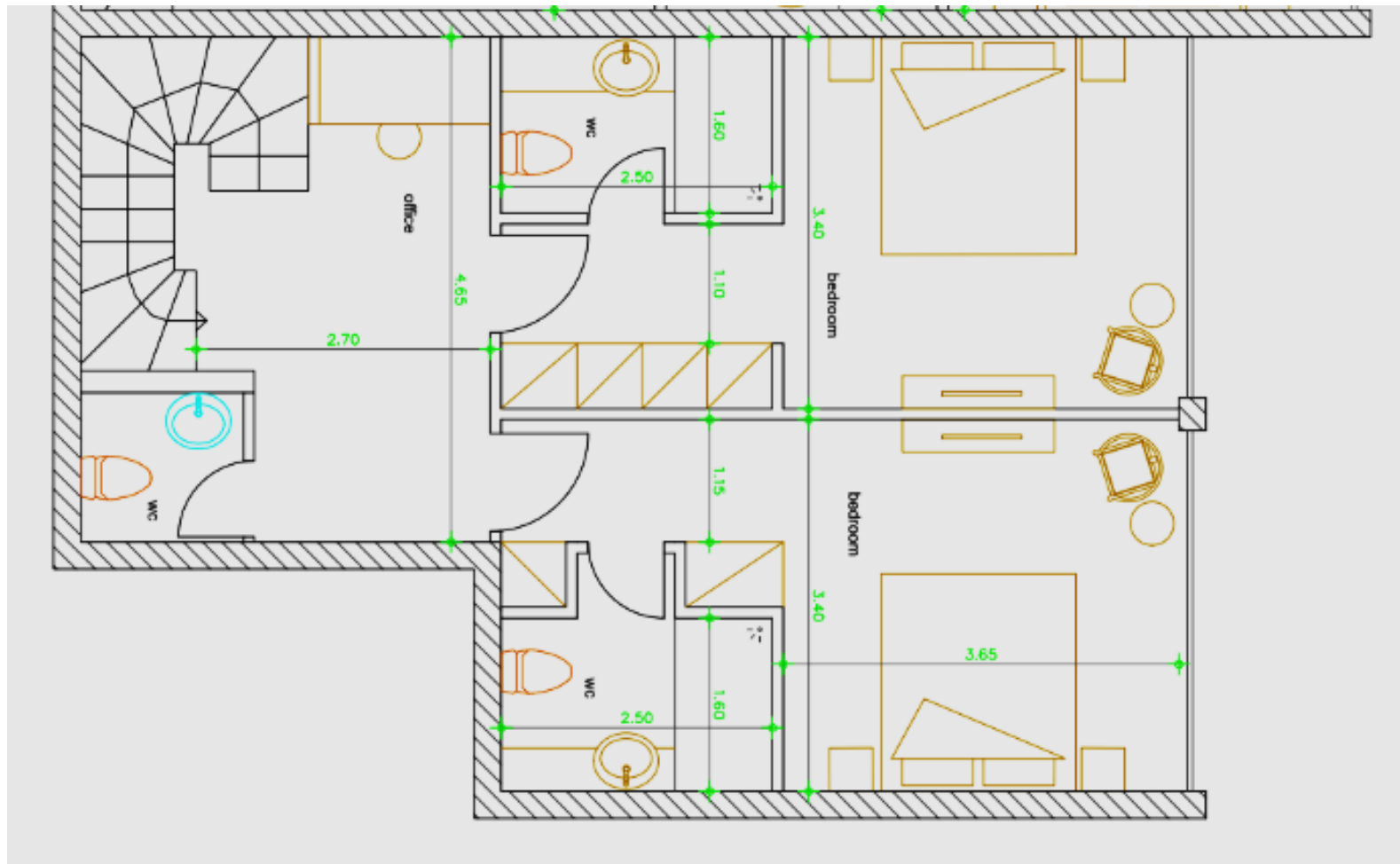
PROPOSAL

Inside area

1. Bed 1.60x2.00m
2. WC in the
3. Hanging closets
4. bench railing

UNDER GROUND SPACE WITH DORMER, HOUSE 3 (-3.00 m height)

ARCHITECTURAL PLAN



PROPOSAL

Inside area

1. 3 WC
2. 2 bedrooms
3. 2 closets each house with suitcase holder-storage
4. Curtains until the ground



KAMAI GROUP
PEFKALI
RESIDENCE
PROJECT